

ECORACER

MAIN PLUS



- WIDE RUNNING SURFACE**
The widest running surface of its category: 48x170 cm.
- HIGH SMOOTHNESS AND MAXIMUM QUIETNESS**
118 ball bearings ensure movement smoothness and quietness.
- SHOCK ABSORBING SYSTEM**
60 hi-grip rubberised slats minimize the impact on joints and ensure the maximum stability when training.
- MAXIMUM SAFETY**
Indication of the correct training posture on the belt. Reverse motion prevented and notification of the belt limit.
- MULTI-DEVICE SUPPORT**
The machine is equipped with tablet and smartphone support.
- LARGE BOTTLE HOLDER**
- EASY MOVE**
Fast and easy motion thanks to the back wheels and one rear handrail.
- EXTREMELY STURDY AND DURABLE**
The Ecoracer weight is of 217 kg, maximum stability even during High Performance Training.
- LONG LIFE AND LOW MAINTENANCE**
The belt does not need lubrication. Long-life components.



MULTI-GRIP HANDLES
Lateral support and double frontal handgrip (low/high) that allows different pushing positions.



7 RESISTANCE LEVELS
Braking system on 7 levels, from free run to a pushing movement.

MAIN EXERCISES



ECOLINE

A UNIQUE CARDIO FITNESS LINE - COMPLETELY ENERGY FREE!



Worldwide Fitness Company

ECO LINE



ECORACER
SPEED
ENDURANCE
STRENGTH
POWER



ECOPOWER RUN
LOW IMPACT
HIGH INTENSITY
PERFORMANCE



ECOCLIMBER
CLIMB
TRAIL RUN
ENDURANCE



ECOLINE

- GREEN**
Sustainability is an important added - value to innovation and new products ideation. For this reason Panatta, that has always been committed in the respect of the environment, has conceived the first cardio fitness line completely energy free!
- WARRANTY**
All the ECOLINE machines have 7 years warranty on frames.
- MADE IN ITALY**
Design and production are 100% Made in Italy; quality and excellence high standards.
- NO MOTOR**
The body is the real engine of your training session! Every single person will have the chance to customize the training intensity depending on the workout level.
- LOW MAINTENANCE**
The ECOLINE machines require low maintenance over the time.
- POLYVALENT EQUIPMENT**
All the ECOLINE machines are polyvalent and multifunctional since they can add up to the gym as single station or integrated to the functional areas. This makes the cross-functional workout even more complete and give incentive to group training.

PANATTA srl - Via Madonna della Fonte 3/c - 62021 Apiro (Mc), Italy - T. +39 0733 611824 - international@panattasport.it - www.panattasport.com
Panatta® reserves the right to modify the documentation included without notice obligation. The brands and patents Panatta® are of property of the Panatta s.r.l. both in Italy and abroad. © Copyright Panatta 2020.



www.panattasport.com

ECORACER

SPEED, ENDURANCE, STRENGTH AND POWER

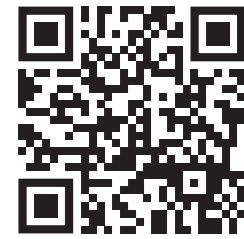


Your body will be the only limit to speed!
A treadmill that is exclusive in the design and unique in its performance. Panatta presents the widest running surface of its category that is curve-shaped and made of rubberised slats for a more comfortable use. Ideal for each kind of athlete since it allows a dynamic workout aimed to train speed, endurance, as well as strength and power. Particularly suggested for HIIT (high intensity interval training). The natural configuration of the curve improves different skills: cardio and muscular endurance, speed, coordination, power and balance.

TECHNICAL DATA		1CF71	
Length	190 cm	Resistance levels	7
Width	90 cm	Braking system	Magnetic
Height	155 cm	Transmission system	Belt
Weight	217 Kg	Speed	Free - set by user
Running Surface	48 x 170 cm	Power supply	Not required (Energy free)
Slats	60	Bottle holder	YES
Guiding bearings	118	Tablet holder	YES

ECOCLIMBER

A MECHANIC CLIMBER, WITH NO MOTOR AND 100% ENERGY FREE



ENERGY FREE

DESIGN & MADE IN ITALY

A unique, space saving and innovative machine. More than 8 different exercises for a complete cardio fitness training focused on legs, glutes and calves where YOU are the real engine!

TECHNICAL DATA		1CF70	
Length	145 cm	Resistance levels	7
Width	90 cm	Machine weight	160 Kg
Height	215 cm	User weight (optimal)	from 50 to 140 kg
Step depth	27 cm	Braking system	Magnetic
Step width	46 cm	Transmission system	Chain/Belt
Step height	19,5 cm	Power supply	Not required (Energy free)
Access step height	32,5 cm	Bottle holder	YES
Minimum height of the ceiling	290 cm	Tablet support	YES

ECOCLIMBER

MAIN PLUS



- HIGH SMOOTHNESS**
Resistance system with permanent magnets.
- COMPACT AND SPACE SAVING**
Overall surface: 1,2 m².
- TOTAL WORKOUT**
Availability of 3 steps that allow changing the intensity of training and lope.
- SAFETY BRAKING SYSTEM**
The safety braking system in the machine allows easily and safely starting and stopping the workout.
- MULTI-GRIP HANDRAILS**
Ergonomic handrails for different types of training.
- MULTI-DEVICE SUPPORT**
The machine is equipped with a support for smartphones and tablets.
- LARGE BOTTLE HOLDER**
- EASY MOVE**
Fast and easy motion thanks to the back wheels and one rear handrail.
- LONG LIFE AND LOW MAINTENANCE**
Low maintenance and design conceived to last over the time. Long-life components.
- MAXIMUM STABILITY**
Hi-grip designed steps.
- 7 RESISTANCE LEVELS**
Chance to change the training intensity.



MAIN EXERCISES



ECOPOWER RUN

HYDRAULIC RESISTANT, INNOVATIVE AND 100% ENERGY FREE



ENERGY FREE

DESIGN & MADE IN ITALY



ECOPOWER RUN allows a cardio fitness training that is complete and efficient. The resistance system with hydraulic pistons always ensures smoothness, quietness and lack of knockbacks. An innovative cardio fitness machine. Energy Free and thought for different types of training: low impact, HIIT (High Intensity Interval Training) and performance.

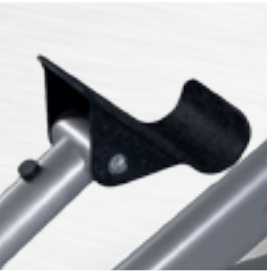
TECHNICAL DATA		1CF72	
Length	180 cm	Resistance system	Hydraulic pistons
Width	70 cm	Lunghezza falcata	95 cm
Height	155 cm	Power supply	Not required (Energy free)
Weight	100 Kg	Bottle holder	YES
Resistance levels	7	Tablet holder	YES

ECOPOWERRUN

MAIN PLUS



- HIGH SMOOTHNESS**
Resistance system with hydraulic pistons.
- COMPACT AND SPACE SAVING**
Overall surface: 1,2 m².
- FULL RANGE OF MOTION**
Machine designed to allow full range of motion to each kind of user: step length 95 cm.
- EASY ACCESS SYSTEM**
The backrest and anti-slip footrest make easier the starting and stopping of the training.
- MULTI - GRIP HANDRAILS**
Different types of training.
- MULTI-DEVICE SUPPORT**
The machine is equipped with support for smartphones and tablets.
- LARGE BOTTLE HOLDER**
- EASY MOVE**
Fast and easy motion thanks to the back wheels and one rear handrail.
- LONG LIFE AND LOW MAINTENANCE**
Low maintenance and design conceived to last over the time. Long-life components.
- MOBILE PLATFORMS**
Mobile platforms to ensure the physiological and correct posture during the workout.
- 7 RESISTANCE LEVELS**
Chance to change the training intensity.



MAIN EXERCISES

